

# Non - chronological reports



## Werewolves

Werewolves, also known as lycanthropes, are mythological or fantastical creatures with the ability to transform into a hybrid wolf-like creature. They are generally found in Europe and Asia from the medieval period. The legend of the werewolf developed in parallel to the belief in witches and a still exists in popular culture today.

**How werewolves work?**

Other werewolves are found throughout history, including generally one of any long story, however that particular legend dates. Werewolves are said to be a variety of races. The lycanthropes were said to be born to women who had sex with a wolf. This creature was said to be able to change into a wolf at night. The first sign to be believed with werewolves was that they were said to be from a large the ground of their skins, being so large to consume it with their change.

**Wolves work**

Over time many stories of them, a werewolf, with werewolves are said to be from a wolf. The most common depiction of a werewolf in the 21st century is a human. Though, werewolves were a form of creature that were said to be from a wolf. This creature was said to be able to change into a wolf at night. The first sign to be believed with werewolves was that they were said to be from a large the ground of their skins, being so large to consume it with their change.

**Introduction**

Werewolves are mythical creatures that are said to be from a wolf. The most common depiction of a werewolf in the 21st century is a human. Though, werewolves were a form of creature that were said to be from a wolf. This creature was said to be able to change into a wolf at night. The first sign to be believed with werewolves was that they were said to be from a large the ground of their skins, being so large to consume it with their change.

**sub-heading**

Werewolves are mythical creatures that are said to be from a wolf. The most common depiction of a werewolf in the 21st century is a human. Though, werewolves were a form of creature that were said to be from a wolf. This creature was said to be able to change into a wolf at night. The first sign to be believed with werewolves was that they were said to be from a large the ground of their skins, being so large to consume it with their change.

**paragraph**

Werewolves are mythical creatures that are said to be from a wolf. The most common depiction of a werewolf in the 21st century is a human. Though, werewolves were a form of creature that were said to be from a wolf. This creature was said to be able to change into a wolf at night. The first sign to be believed with werewolves was that they were said to be from a large the ground of their skins, being so large to consume it with their change.

**sub-heading**

Werewolves are mythical creatures that are said to be from a wolf. The most common depiction of a werewolf in the 21st century is a human. Though, werewolves were a form of creature that were said to be from a wolf. This creature was said to be able to change into a wolf at night. The first sign to be believed with werewolves was that they were said to be from a large the ground of their skins, being so large to consume it with their change.

**paragraph**

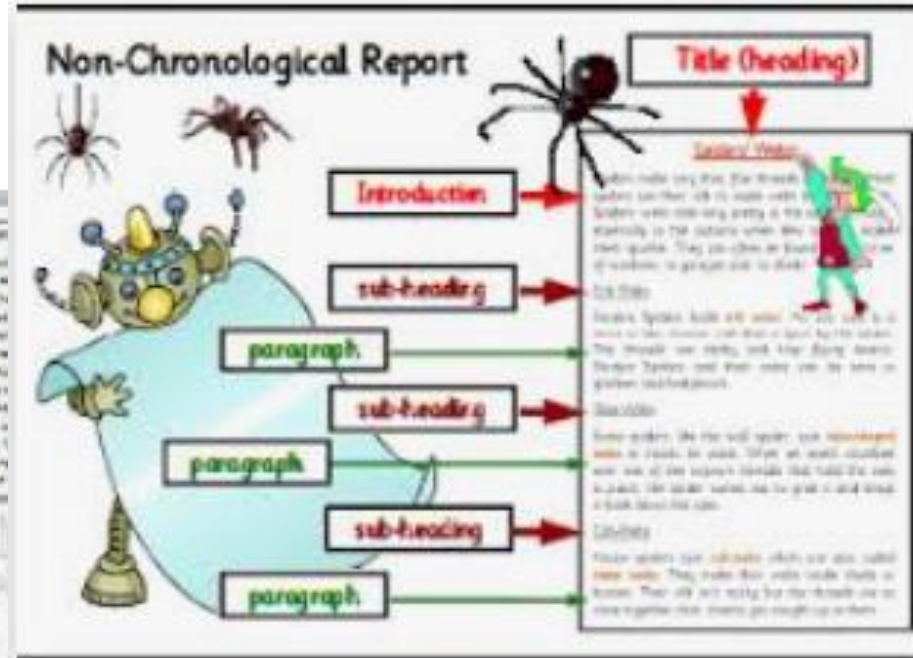
Werewolves are mythical creatures that are said to be from a wolf. The most common depiction of a werewolf in the 21st century is a human. Though, werewolves were a form of creature that were said to be from a wolf. This creature was said to be able to change into a wolf at night. The first sign to be believed with werewolves was that they were said to be from a large the ground of their skins, being so large to consume it with their change.

**sub-heading**

Werewolves are mythical creatures that are said to be from a wolf. The most common depiction of a werewolf in the 21st century is a human. Though, werewolves were a form of creature that were said to be from a wolf. This creature was said to be able to change into a wolf at night. The first sign to be believed with werewolves was that they were said to be from a large the ground of their skins, being so large to consume it with their change.

**paragraph**

Werewolves are mythical creatures that are said to be from a wolf. The most common depiction of a werewolf in the 21st century is a human. Though, werewolves were a form of creature that were said to be from a wolf. This creature was said to be able to change into a wolf at night. The first sign to be believed with werewolves was that they were said to be from a large the ground of their skins, being so large to consume it with their change.



**Monday**

Complete the non-chronological reading comprehension:

British Science Week Journeys

Tuesday

We recently did some fantastic non-chronological reports about elephants and a made-up animal.

We are going to write a non-chronological report about an alien hotel resort.

But first, let's have a recap of the different ways we can extend our sentences to add detail to our writing.



Tuesday

## Conjunctions to extend sentences

### Examples in the model texts - compound sentences using FANBOYS

The giant panda is the most well known **but** the red panda also lives in the mountains in China.

Elephants live in Africa and India **and** are the largest animals that live on land.

Elephants are usually very gentle **but** can get quite cross.

When a polar bear swims under water it closes its nostrils **so** no water can get in.

**Now write your own sentences using FANBOYS about something you may find at the alien hotel.**

Tuesday

## Conjunctions to extend sentences

Examples in the model texts - other examples of extending sentences

Polar bears are solitary, **which** means they spend most of their life alone.

Polar bears are excellent swimmers **because** they use their big front feet to paddle and their back legs to steer.

They have two coats of fur and a thick layer of blubber **to** help insulate the polar bear's body from the cold.

Also, polar bears have wide, large paws, **which** help them to walk in the snow.

**Now write your own sentences and extend.**

Tuesday

Add detail (by making comparisons)

Pandas are very fussy eaters. Giant pandas only eat bamboo - which is a type of grass that grows in the mountainous areas of China – **whereas** their cousin, the red panda, has a varied diet consisting of nuts and seeds

The Giant Panda, which is known by other names including: parti-coloured bear, bamboo bear and the great panda, **is easily distinguished from** its distant cousin the red panda due to its large size and black-and-white coloured markings.

**Unlike most bears**, polar bears are carnivores so they eat only meat.

**Like other mammals**, ...

**Now write your own sentences making comparisons about your alien hotel resort.**

Wednesday

We are going to write a non-chronological report about an alien hotel resort.

Let's look at an extract of the model we used when we wrote about elephants to help us think about the structure of our report and to see how sentences have been extended.

Wednesday

## Elephants

Elephants (Loxodonta) are the largest land animals in the world. The African elephant is found on the continent of Africa whilst the Asian elephant is found in Asia. All elephants are mammals and herbivores - which means they are plant eaters.

### Appearance:

The most distinctive feature of these animals is their trunks. Trunks are used to breath and smell, as well as pick up food and water. Remarkably, an elephant's trunk can intake up to 55 litres of water at a time! In fact, their trunks are their most versatile appendage. They are used to pick up food as small as a blade of grass, but also to pull down tree branches to get food.

Although you might think all elephants are very similar in appearance, there are actually some distinct differences between the African and Asian elephant. The African elephant is greater in size and has larger ears too. African elephants have two tips at the end of its trunk that it can use like fingers to pick things up whereas the Asian elephant has only one finger-like tip. Furthermore, the Asian elephant's skin is less wrinkled and they have more of a humped back. Surprisingly, although elephants have excellent hearing and a sense of smell, they have poor eyesight.

All females (cows) have ivory tusks unlike males (bulls) where, although all males have tusks, only a small number of Asian bulls have them. Elephant tusks do not cease growing. Therefore, enormous tusks indicate old age in these gentle giants. Sadly, their tusks have become their downfall as humans have hunted these amazing animals in order to gain profit from their ivory.



## Habitat:

Typically, elephants are able to survive in a variety of different locations **due to** the huge variety of food sources they consume. Many people assume that wild elephants only live in the grasslands. **And, whilst** this is one of their main habitats, they can also be found in the Savannah, forest areas, where there are swamps, and everything in between! Bulls usually live a solitary and nomadic life; **which means** they live alone and wander.

## Diet:

Elephants roam great distances to find enough food. In fact, 80% of an elephant's day is spent eating. They use their brick size teeth to eat grass, leaves, tree bark, bushes and roots. Tree bark is their favourite food; it contains calcium and roughage **thus** aiding digestion. On account of their high intelligence, elephants can modify their eating habits based on their habitat. A diverse range of ecosystems can be used to promote elephant survival from forests to woodlands, savanna, grassy plains, swamp areas and sparse deserts. **And**, in dry areas, they can even dig for water.

The oldest wisest matriarch can find her way to food even when it has been a great number of years that they have roamed that particular area.

Elephants truly are remarkable creatures. Unfortunately, the loss of their habitats and increasing conflict with human populations and poaching for ivory are placing the elephant's future at risk.

Wednesday

You are going to write a non-chronological report about an **alien hotel resort**.

and add it to your planning sheet.

Plan your report under the appropriate headings.



Wednesday

Planning sheet - Alien Hotel Resort

Introduction:

Rooms

Facilities

Weather

Conclusion

Thursday/Friday

Write your non-chronological report about your alien hotel resort.

Look at the success criteria to help you.

Success Criteria	SA
Does my first paragraph tell the reader something general to introduce the topic?	
Do my paragraphs contain information about the same topic and are they in a logical order?	
Have I included detail about special features, or made comparisons? Unlike other hotels...	
Does presentation make the information easy to locate? Underlined headings or subheadings, labels, CAPITALS, bold print, text boxes.	
Have I used: ☑ factual adjectives, ☑ precise and formal nouns ☑ modal verbs?	
Have I used some conjunctions to explain points further (so, because, also, when, which)?	
Have I used present tense and third person all the way through?	
Is the style formal, sometimes using the passive voice? (Their young are reared by...)	