

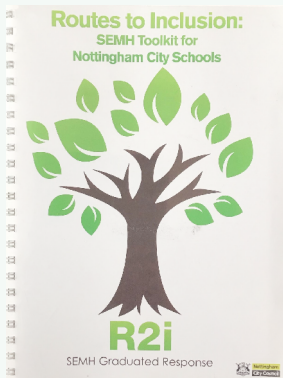
Routes to Inclusion (R2i)



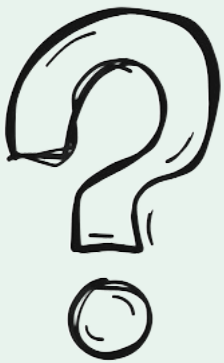
A toolkit developed by Nottingham City Council to support schools to promote the inclusion of all children and young people.

What is R2i?

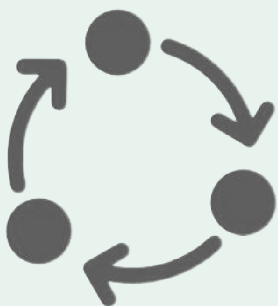
The R2i initiative aims to support schools in their early identification of young people who might need further support. R2i provides a range of resources for schools to use in order to help young people have the best chance of accessing learning and for your child to be happy and successful in school.



What does R2i involve?



Your child's class teacher will complete an 'Initial Concerns form' at the point of having early concerns around how your child is doing at school. This may be around their friendships, their learning or management of their emotions. This will be shared with the Special Educational Needs and Disability Coordinator (SENDCo) who will work with key adults around your child to move through a step by step assessment approach.



The assessments involve looking at the learning environment around your child as a first step. This is followed by asking your child for their views about their school experience. We would also gather further information from yourself as the parent/carer and from key staff about your child's strengths and their needs, as well as carry out observations to see how your child is getting on in the classroom.

How will R2i benefit my child?



Through using the R2i resources we hope to find out the best way that your child engages in learning as early as possible in their school journey. This then helps us to make sure that your child has the best possible support. The R2i process can give parents an opportunity to share their views.

The assessment information gathered will help school to develop strategies and interventions which aim to help your child with their engagement in learning activities. Example strategies could include providing choice of work tasks, use of reward charts, access to time out space etc.

The R2i assessment data can be helpful for supporting referrals to outside agencies, such as paediatricians and other support agencies. We would always ask for your consent before we involved an outside agency and before this data was shared with anyone outside of school.

Find out more



Speak to your school SENDCo

