



Behaviour Policy Addendum Primary
Addendum for Covid-19 (in line with DfE guidelines)

This Addendum does not replace St Mary's Catholic Academy's Behaviour Policy

1st June 2020



Contents:

Our Lady of Lourdes Catholic Multi Academy Trust Mission Statement	3
--	---

Context

1. Altered routines for arrival or departure.
2. Instructions on hygiene, such as handwashing and sanitising.
3. Instructions on who pupils can socialise with at school.
4. Moving around the school as per specific instructions (for example, one-way systems, out of bounds areas, queuing).
5. Expectations about sneezing, coughing, tissues and disposal ('catch it, bin it, kill it') and avoiding touching your mouth, nose and eyes with hands.
6. Tell an adult if you are experiencing symptoms of coronavirus.
7. Sharing any equipment or other items including drinking bottles.
8. Expectations about breaks or play times, including where children may or may not play.
9. Use of toilet.
10. Rules about coughing or spitting at or towards any other person.
11. Rules for pupils at home about conduct in relation to remote education.
12. Rewards and sanction system where appropriate.
13. Public Transport.

Annex A: Hand washing Poster

Annex B: Catch it, Bin it, Kill it Poster:

Annex C: Flow Chart if pupils or staff become unwell



Our Lady of Lourdes Catholic Multi Academy Trust Mission Statement

We are a partnership of Catholic schools and our aim is to provide the very best Catholic education for all in our community and so improve life chances through spiritual, academic and social development.

We will achieve this by:

Placing the life and teachings of Jesus Christ at the centre of all that we do.

Following the example of Our Lady of Lourdes by nurturing everyone so that we can all make the most of our God given talents.

Working together so that we can all achieve our full potential, deepen our faith and know that God loves us.

Being an example of healing, compassion and support for the most vulnerable in our society.

Galatians 5:22-23: "God's Spirit makes us loving, happy, peaceful, patient, kind, good, faithful, gentle, and self-controlled. There is no law against behaving in any of these ways."



Context

In light of the need for children to behave differently when they return to school, and the new systems St Mary's have put in place to support that, this Addendum supplements the schools Behaviour policy in line with the following government guidelines as pupils begin to return to school following the lifting of Coronavirus lockdown measures.

<https://www.gov.uk/government/publications/preparing-for-the-wider-opening-of-schools-from-1-june/planning-guide-for-primary-schools#annex-c-posters>

Pupils' Behaviour both in and out of school is expected to be in line with St Mary's current Behaviour policy. This Addendum relates specifically to the current government guidelines for pupils returning to school as Coronavirus restrictions are lifted and may change as Government guidance changes. Failure to follow the measures set out in the Addendum could potentially lead to sanctions being imposed in line with (insert school name) Behaviour Policy. We accept that our younger children will need additional help and support from staff to follow these guidelines and, as ever, our staff will be very positive in how they remind younger children of how they can stay safe.

1. Altered routines for arrival or departure:

To support social distancing, we have staggered the start and end times for our different year groups and identified clear entrance and exit points. Please adhere to these timings, locations and maintain a social distance at all times both inside and outside the school gate.

F1 Full time

Drop off – 8:45am - enter via the nursery gate. One parent to accompany their child to the F1 cloakroom and exit through the main carpark gates.

Pick up – 2:45pm - enter via the nursery gate. Collect from the entrance to the F1 cloakroom and exit through the main carpark gates.

F1 Afternoon

Drop off – 12:30pm - enter via the nursery gate. One parent to accompany their child to the F1 outdoor gate and exit through the main carpark gates.

Pick up – 2:45pm - enter via the nursery gate. Collect from the F1 outdoor gate and exit through the main carpark gates.

Y1

Drop off - 9am – enter via the main entrance gate, one parent to accompany their child to the KS1 playground where their school adult will meet them at the Y2 or KS1 door. Parent to exit via the KS1 playground gate.

Pick up - 3pm - enter via the main entrance gate, wait for your child (at a social distance) on the KS1 playground. The school adult send your child to you via the Y2 or KS1 door. Exit via the KS1 playground gate.



parents accompany children to the F2 entrance and exit through KS1 gate.

Y6

Drop off – 9:15am - children enter via the main entrance gate. Parent to accompany their child no further than the KS2 gate. Child will enter the school building via the Y5 or Y6 door. Parent to exit via the main gate.

Pick up – 3:15pm - enter via the main entrance gate and wait at a social distance on outside the Y5 and Y6 classrooms. Exit via the KS2 gates. If your child walks home on their own, we will send them home at 3:15pm reminding them to keep a social distance from others.

Key worker children

Drop off – 8:45am - enter via the main entrance gate, one parent to accompany their child to the school office. Parent to exit via the main entrance gate.

Pick up – 2:45pm - enter via the main entrance gate and wait at a social distance on outside the Y3 classroom. Exit via the main entrance gates.

2. Instructions on hygiene, such as handwashing and sanitising (see Annex A):

- Pupils will wash their hands on arrival and departure from school.
- Pupils will be taught the appropriate technique for hand washing (see poster Annex A)
- Pupils will be expected to wash their hands before and after going to the toilet.
- Pupils will be instructed to not touch door handles/handrails but use elbows to open doors.
- Hand sanitiser will be provided in all classrooms.
- Soap will be available in all washrooms.

3. Instructions on who pupils can socialise with at school;

- Pupils must stay within their own 'social bubble' both in the classroom and at break and lunchtimes.
- Staff will aim to keep pupils 2m apart from other pupils and staff within their bubble and will issue reminders as necessary.
- DfE guidance recognises that: ***unlike older children and adults, children in the early years cannot be expected to remain 2 metres apart from each other and staff.*** The full DfE guidance on Social Distancing in EYFS can be found through the following weblink: <https://www.gov.uk/government/publications/preparing-for-the-wider-opening-of-early-years-and-childcare-settings-from-1-june/planning-guide-for-early-years-and-childcare-settings#Section8>

4. Moving around the school as per specific instructions (for example, one-way systems, out of bounds areas, queuing)

- If children are required to move around school, they will follow an adult's instructions. Children will be asked to keep a social distance of approximately 2m (when moving as part of their hub or queuing). Children will also be asked to stick to their zones to **keep** restrict contact with other hubs.

5. Expectations about sneezing, coughing, tissues and disposal ('catch it, bin it, kill it') and avoiding touching your mouth, nose and eyes with hands (Annex B)



- Pupils must follow 'Catch it, Bin it, Kill it' protocol when sneezing/blowing nose.
 - Pupils must bin any used tissues immediately; bins will be provided in classrooms and around the school to dispose of tissues.
 - Pupils must wash their hands after blowing their nose.
 - Pupils will have tissues near their desks but are advised to bring their own where possible.
 - Pupils must not sneeze in the face of another person; any pupil deliberately sneezing in the face of another pupil or member of staff will encounter sanctions as per the Behaviour policy.
- 'Catch it Bin it Kill it'** posters to be displayed in classrooms/toilets/staffrooms/outdoors where possible

6. Tell an adult if you are experiencing symptoms of coronavirus (Annex C; Flow chart if pupils/staff become unwell)

- Pupils must tell an adult immediately if they have any of the following symptoms:

Common Symptoms of coronavirus

- Fever/high temperature
- New continuous cough
- Loss of taste or smell

Other less common symptoms of coronavirus include:

- Shortness of breath or difficulty breathing
- Chills
- Muscle pain
- Sore throat
- Persistent runny nose

Parents must inform school immediately if there are any changes to home/mobile telephone numbers.

7. Sharing any equipment or other items including drinking bottles

- Pupils must not share equipment and where possible in EYFS
- Children to bring their own water bottle to school
- F2 – Y6 pupils will have a tray to put their own equipment into during the day
- EYFS will have 8 boxes containing equipment for continuous provision on a rota. Each hub will have an allotted box for one week. The boxes will then be stored and remain untouched for at least 72 hours.
- Pupils will self-mark where they can.
- Pupils must not share water bottles or food.
- Any play equipment used within a hub (e.g. footballs) will not be used by another group within 72 hours unless cleaned before use.

8. Expectations about breaks or play times, including where children may or may not play;

- At playtime, pupil's will stay with their 'hub' and within their hub's outdoor space
- Pupils will listen and adhere to adult instruction.

9. Use of toilet

- Children may use the toilet one at a time. When using the toilet children will 'stop, knock and wait' before entering.



- Ensure that pupils wash hands before and after they visit the toilet.

10. Rules about coughing or spitting at or towards any other person

- Pupils must not cough or spit in the face of another person; any pupil deliberately coughing/spitting in the face of another pupil or member of staff will encounter sanctions as per the Behaviour policy.

11. Rules for pupils at home about conduct in relation to remote education

- Pupils are expected to complete work distributed by their teacher and directed by their adult at home.
- If work is tricky, try again, then ask an adult at home for help. If a pupil is still unsure, please email the teacher for support.

12. Rewards and sanction system where appropriate:

- See St Mary's Behaviour policy

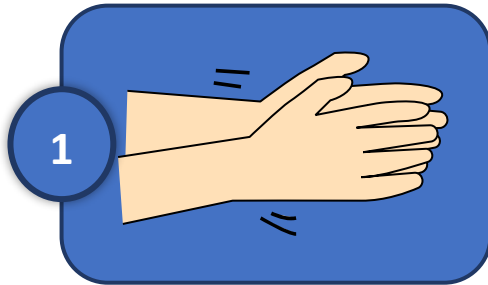
13. Pupil Transport:

- Pupils are expected to conform to the standards of behaviour set out within St Mary's own policy and those of any public/private transport company they use to get to or from school, including any social distancing rules specified by these companies.

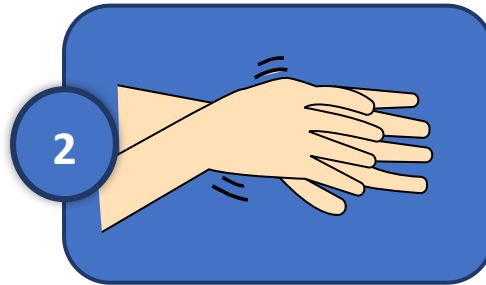
Any changes to the above will be communicated to parents.



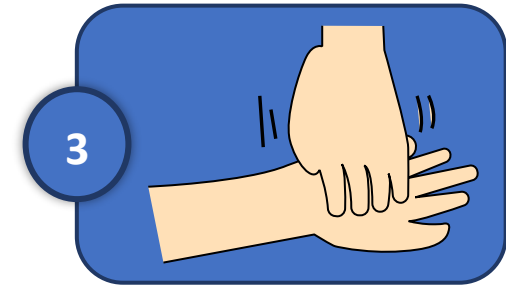
Annex A: Hand washing Poster



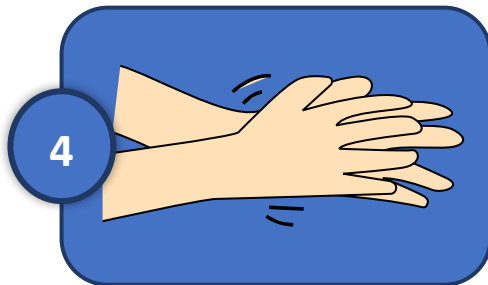
1
Wet hands with water,
apply soap and rub hands
palm-to-palm



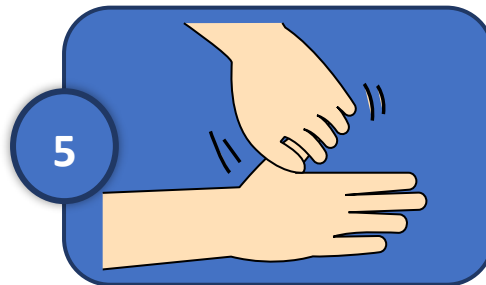
2
Rub back of each hand
with opposite palm



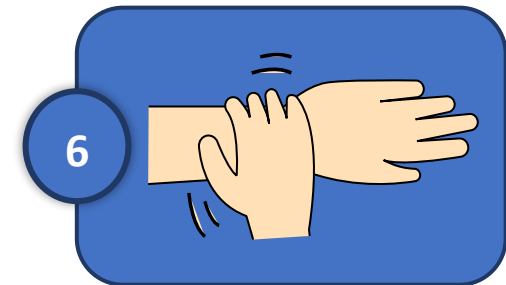
3
Rub fingertips on opposite
palms to wash under nails



4
Rub between fingers



5
Rub each finger, thumb
clasped in opposite hand



6
Rub Wrists



Annex B: Catch it, Bin it, Kill it Poster:

CATCH IT

Germs spread easily. Always carry tissues and use them to catch your cough or sneeze.



BIN IT

Germs can live for several hours on tissues. Dispose of your tissue as soon as possible.



KILL IT

Hands can transfer germs to every surface you touch. Clean your hands as soon as you can.

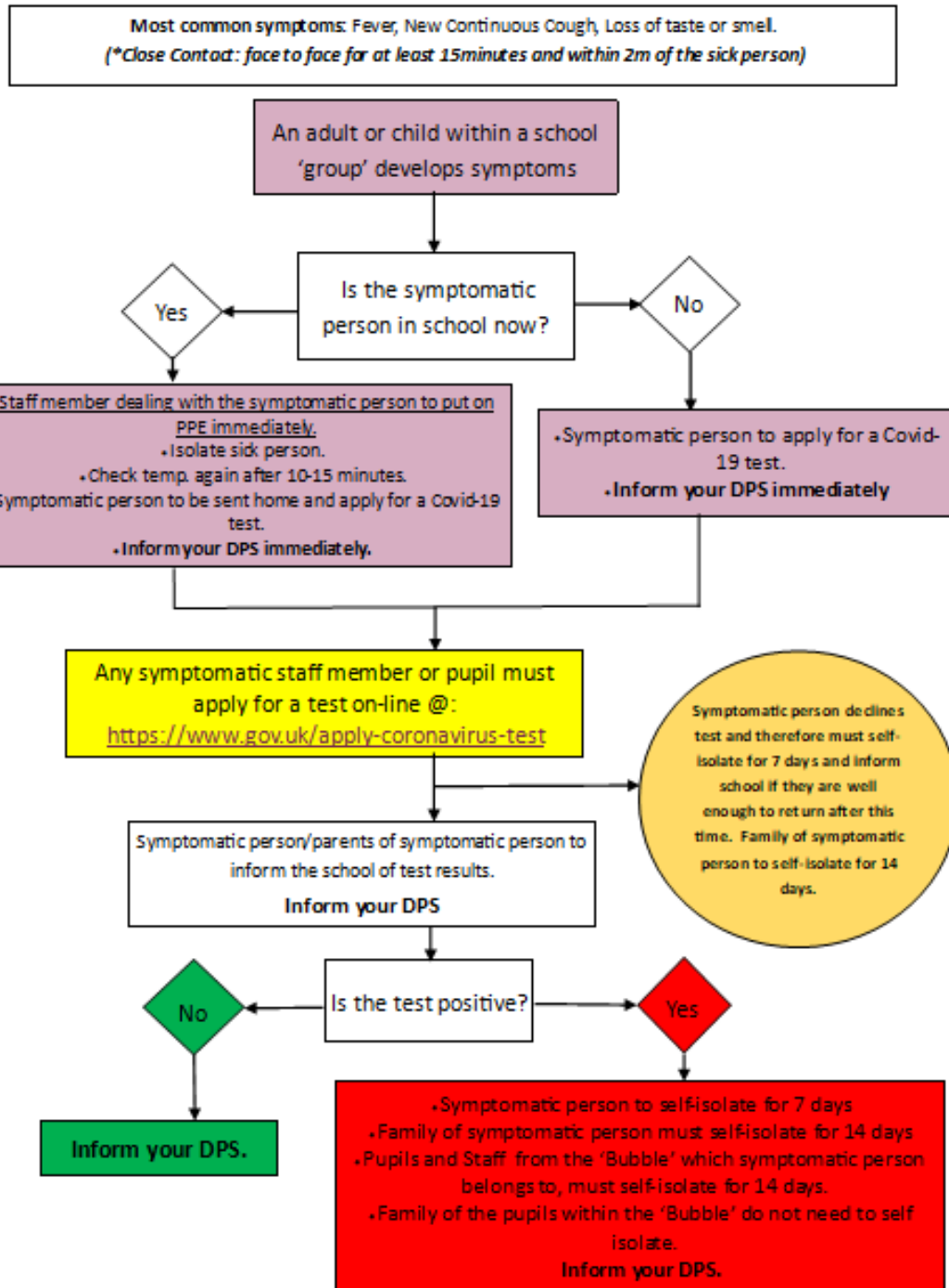


© Crown copyright 2007. All rights reserved. Reproduced by permission of the Controller of Her Majesty's Stationery Office.



Annex C: Flow Chart if pupils or staff become unwell

Coronavirus in School—Flow Chart



Contact your DPS immediately if a child/adult in your school shows any Covid-19 symptoms:
 Tel: 07852133116 Email: c.maher@ololcatholicmat.co.uk
 Tel: 07852133114 Email: m.dales@ololcatholicmat.co.uk